



## ***EZILIFT TRANSPORT SOLUTIONS***

Owner & Operation Manual

# IMPORTANT

**KEEP IN VEHICLE**



## **Model: ELTT-2000**

---

**Sydney**  
12 Woorang St  
Milperra NSW 2214  
Phone +612 9774 4077  
Fax +612 9774 4088

---

## CONTENTS

### *Owner & Operation Manual*

|                           |    |
|---------------------------|----|
| Introduction              | 3  |
| Safety Information        | 4  |
| Description               | 5  |
| Operation Instructions    | 5  |
| Specifications            | 8  |
| Load Capacity Chart       | 9  |
| Inspection & Maintenance  | 10 |
| Wiring Schematic          | 12 |
| Hydraulic Drawing         | 12 |
| Tailgate Trouble Shooting | 13 |
| Tailgate Registration     | 14 |
| Service History           | 15 |
| Warranty Policy           | 16 |

### PLEASE NOTE

**THE INFORMATION INCLUDED IN THIS PUBLICATION IS CORRECT AT THE TIME OF PRINTING. HOWEVER, DUE TO PRODUCT DEVELOPMENT AND ENHANCEMENT, EZILIFT SERVICES RESERVES THE RIGHT TO DISCONTINUE OR CHANGE THE DESIGN OR SPECIFICATIONS AT ANY TIME WITHOUT NOTICE AND WITHOUT INCURRING ANY OBLIGATION WHATSOEVER.**

---

## INTRODUCTION

Your EZILIFT TAILGATE OWNERS MANUAL is a guide for the correct use of the product. It in no way intends to encourage usage of the tailgate by those not qualified to do so.

**IT IS THE OWNERS/OPERATORS RESPONSIBILITY** to read this manual carefully and understand the information contained in the **EZILIFT OWNERS MANUAL** before using the tailgate. Please follow our recommendations as contained in this manual to ensure both your safety and the safety of others.

This manual assumes the tailgate is installed in the proper manner as per the EZILIFT INSTALLATION MANUAL and the tailgate is operating correctly and is undamaged. If the Owner/Operator suspects damage or incorrect operation please contact EZILIFT or an EZILIFT authorized agent for immediate correction and assistance.

EZILIFT can be contacted on:-

Phone: +612 9774 4077  
Fax: +612 9774 4088  
E-mail: [sales@ezilift.info](mailto:sales@ezilift.info)

---

---

## SAFETY INFORMATION

The following information must be read and understood before attempting to operate your EZILIFT tailgate loader.

- Read and understand the Ezilift owners/operators manual.
- Familiarize the owner/operator with all safety decals.
- **DO NOT** operate the tailgate unless the owner/operator has received proper instructions and understands the operation of the tailgate.
- **Improper use of the tailgate may lead to serious injury or damage to persons or property.**
- Always visually inspect the tailgate for any obvious damage before using the tailgate.
- The operator must always check that the vehicle is properly secured before using the tailgate.
- **ALWAYS** be in a position to visually check that the tailgate working area, including the area where loads may fall, is clear of any obstacles, vehicles or other persons.
- **NEVER OVERLOAD THE TAILGATE.**
- Refer to the load lifting chart and observe these restrictions.
- **LOADS should always be stable** and positioned towards the front and centre of the platform.
- **ALWAYS stand clear** of the working area and never allow anyone to pass through the working area of the tailgate.
- **EZILIFT** does not recommend operators ride on platforms.
- **NEVER** place any part of your body between the tailgate and the vehicle body.
- **KEEP** hands and feet clear of all shear and crush points.
- **ALWAYS be aware** of the battery isolation switch. Never attempt to override the switch.
- **ALWAYS remove** the key or lock the control box to stop unauthorized use of the tailgate.
- **NEVER** alter the preset speed controls of the tailgate.
- **DO NOT** use forklifts on the tailgate.

**NEVER USE THE TAILGATE** if there is any:-

- Unusual noise
  - Unusual vibration
  - Speed variation during lowering or raising operation
  - Loss of hydraulic oil
  - Structural damage
  - **NEVER** attempt any repairs yourself, always notify a qualified technician to do so.
  - If the tailgate is disabled or in need of urgent repair, whilst in a moving traffic situation, take precautionary measures to ensure personal safety.
  - Always endeavor to remove the vehicle to an isolated safe area for repair.
-

## DESCRIPTION

The ELTT-2000 model has been designed to provide the operator with a smooth and flat surface that allows the safe handling of a wide variety of loads. The wedge platform allows the largest platform area required.

The lift has a flat platform giving the maximum area possible to allow the operator to handle large and bulky loads with ease and safety.

Other design features of the tailgate include: -

- Fully sealed hydraulic unit.
- Fixed four button control station with Emergency Stop button
- Hand held four button control.
- Large Wedge Platform
- Greaseable high grade pins with bronze bushes

## OPERATING INSTRUCTIONS

### WARNING

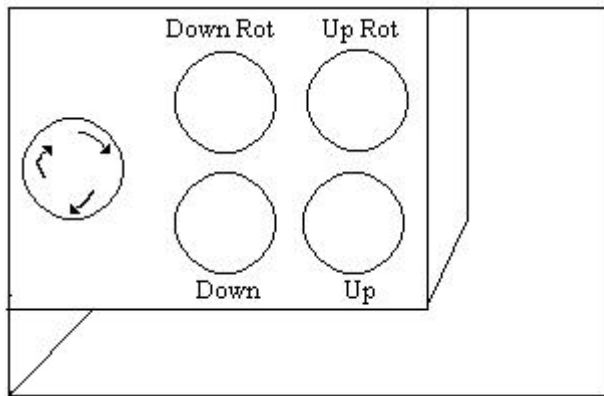
#### **Read Carefully and Ensure You Fully Understand All Procedures**

1. Improper use of the tailgate loader may cause serious personal injury. Do not operate until you have read, and understand the correct operating procedures.
  2. Ensure the vehicle is securely braked before using the tailgate.
  3. Inspect the tailgate loader for damage before using. If damage is found or suspected, do not use the Tailgate. Contact your nearest Ezilift Authorized Service Agent for advice.
  4. Observe safe working load limits whilst using the Tailgate Loader
  5. Ensure all loads are placed in the centre of the platform.
  6. Ensure the area is clear of all obstacles and people before and whilst using the Tailgate Loader.
-

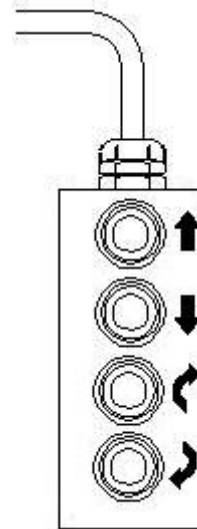
7. The Tailgate Loader is not a passenger lift. Do not stand or ride on the loading surface at any time.

### Using the Tail Gate Loader

1. Stand clear of the Tailgate Loader at all times.
2. Open control box lid.
3. Turn the isolating switch to "ON" position.
4. Release the safety chain.



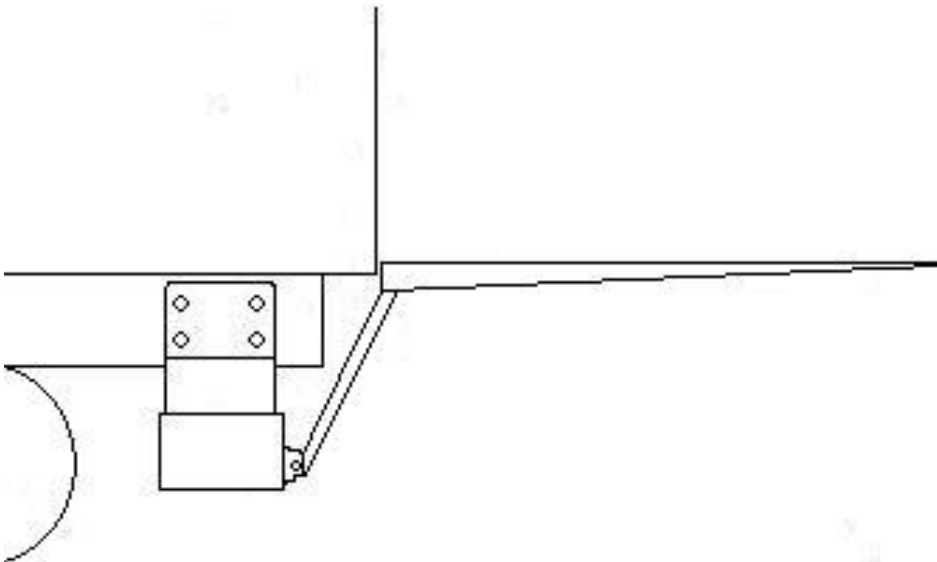
CONTROL BOX



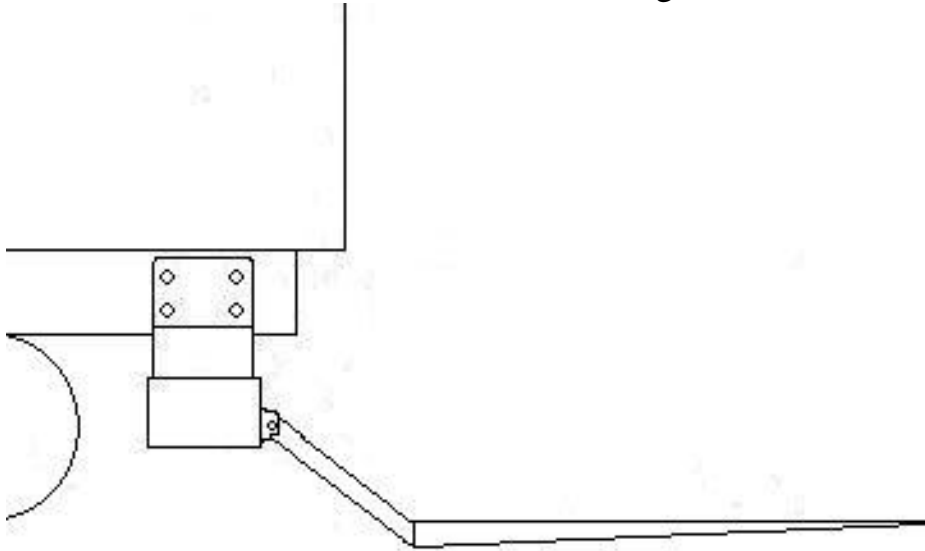
HAND CONTROL

### To operate the Tailgate

5. Press the "DOWN ROTATION" button until the Tailgate Loader is level with the truck floor.



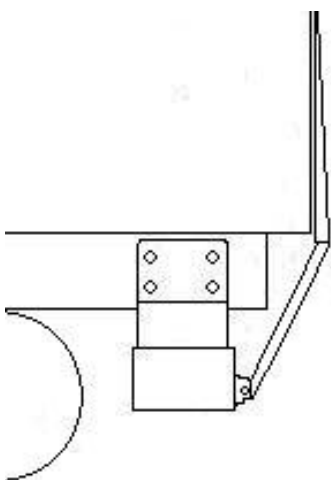
6. Press the “DOWN” button until the Tailgate Loader reaches the ground.



7. The Tailgate Loader is now ready for use.
8. To operate the Tailgate Loader press the “UP” button to raise the load and the “DOWN” button to lower the load.

### **Stowing the Tailgate Loader into the stored Position**

1. Raise the platform until it is level with the truck floor.
2. Press the “UP ROTATION” button until the Tailgate loader is hard up against the back of the truck.



3. Connect the safety chain to the platform.
4. Push the isolating switch to turn off the Tailgate.

\*NOTE Do not over stretch the hand control cable when using as you may cause damage.

---

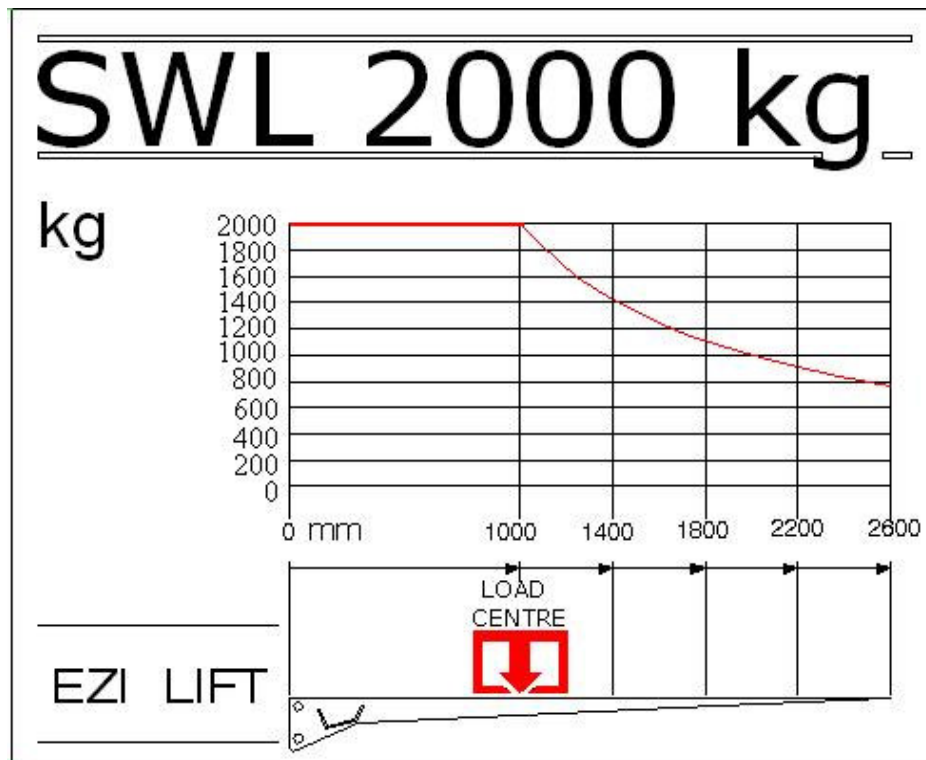
## STANDARD SPECIFICATIONS

The ELTT-2000 model has been designed in accordance with AS1418.8 – 1989, for a Safe Working Load (SWL) 2000kg

|                              |  |
|------------------------------|--|
| Capacity (SWL)               | 2000 kg  |
| Platform Length              | Maximum 2400mm or 2600mm   |
| Platform Width               | Maximum 2450mm   |
| Installed Weight             | 570 kg   |
| Minimum Fitting Requirements | 1000 mm  |
| Maximum Fitting Requirements | 1500 mm  |
| Power pack                   | 12 or 24 Volt  |
| Operation                    | Power up/Gravity down  |
| Controls                     | Emergency stop button<br>Fixed control station<br>Removable hand control |
| Locking device               | Safety chains  |

---

## LOAD CAPACITY CHART



**Load capacity chart ELTT-2000.**

1. All loads applied to the platform must be centrally located and in accordance with the safe working load chart above. Avoid loads applied off centre as the load capacity is reduced and incorrect loading could cause problems in operation.
2. Ensure that the load is stable and will not move during raising or lowering.
3. Ensure the vehicle is parked in a safe, stable and level position with parking brake applied before operating the tailgate.

### IMPORTANT NOTE:

**The load must not overhang the front edge of the platform, closest to the vehicle body, as this can: -**

- a) Jam the load between the platform and the rear of the body when raising
- b) Overturn or destabilize the load when lowering.

### WARNING:

- a) Extreme care should be taken when lowering the platform to the ground, to ensure that the operators' and/or bystanders' feet and limbs are kept clear from the underside of the platform.
- b) Never ride on the platform when lifting and lowering otherwise the additional weight could overload the platform and/or the load may shift causing injury. The remote handset cord may get jammed between the platform and the vehicle body.

**Incorrect use of the tailgate loader may cause serious injury. Do not operate unless you have read and understand the above instructions.**

## **INSPECTION and MAINTENANCE**

The following inspection and maintenance operations should be adhered to at all times. EZILIFT offers a maintenance agreement with a service procedure performed at 3 monthly intervals to ensure a trouble free and safe operation of your tailgate loader.

**EZILIFT recommends that only trained persons should attempt the following tasks**

### **Daily Checks**

Check that all retaining bolts and pins are in place

Check for any obvious hydraulic leaks

**To check hydraulic oil levels make sure the platform is safely on the ground. Seek guidance from EZILIFT as to the proper oil level for your unit.**

### **CAUTION:**

Check for accidental damage, distortion or cracks.

Check the locking device is operating correctly.

---

## **Monthly Checks**

Monthly checks should be completed with more attention to fine detail.

### **CAUTION:**

**Unlock the tailgate and lower to ground and turn the isolator off to perform the following tasks.**

Clean unit thoroughly and inspect for hydraulic leaks.

Clean and check all welds for cracks or damage.

Check all retaining bolts and pins are in place.

Lubricate all grease fittings.

Check tailgate through its full operating sequences, ensuring that all functions operate correctly.

Check the lifting and lowering speed of the tailgate.

## **Yearly Checks**

Carry out normal monthly services.

.

Drain and clean hydraulic tank and filters.

Replace hydraulic oil with 32 grade hydraulic oil only.

Check all electrical cables for damage or corrosion.

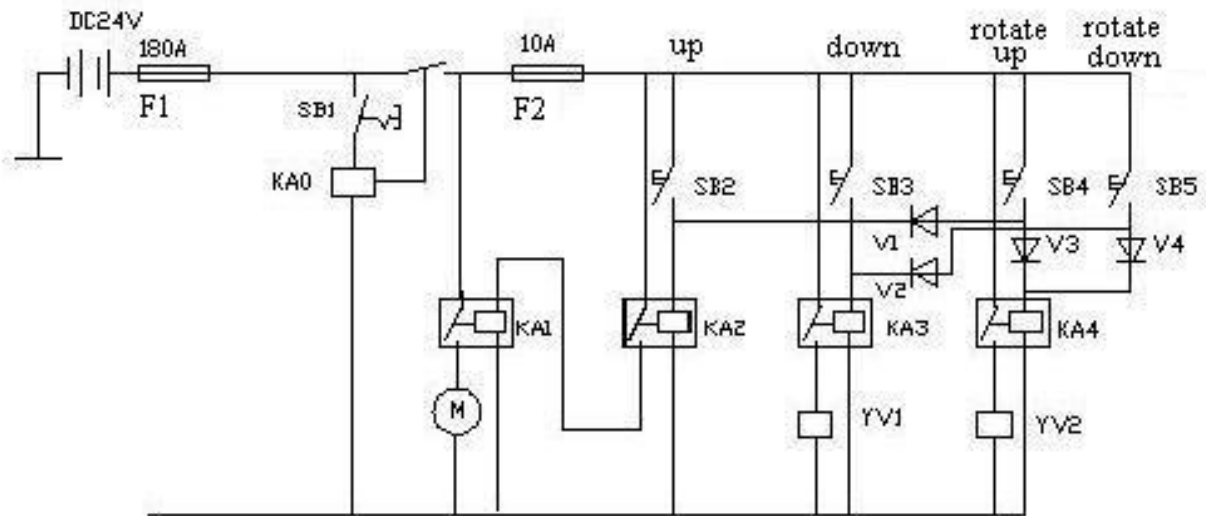
Check tailgate through its full operating sequence.

Check the lifting capacity.

**Report to EZILIFT any damage or concerns you may have to the performance of your tailgate.**

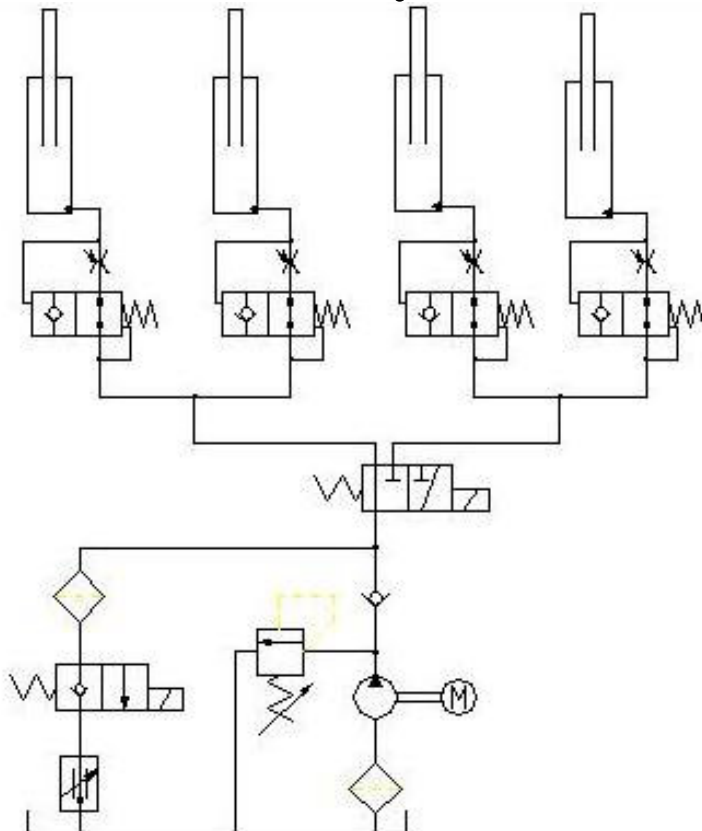
---

## WIRING SCHEMATIC



|     |            |
|-----|------------|
| SB  | contact    |
| KA  | relay      |
| F   | fuse       |
| M   | motor      |
| YV1 | down valve |
| YV2 | tilt valve |

## Hydraulic Drawing



## TAILGATE TROUBLE SHOOTING

| <b>Problem</b>                       | <b>Cause</b>  | <b>Possible Solution</b>   |
|--------------------------------------|---|--|
| Motor not running                    | Isolator switch is off<br>Isolator switch is defective<br>Low battery<br>No current on buttons<br>Earth strap is loose<br>Starter solenoid is defective<br>4-button hand control is defective | Turn switch on<br>Repair or replace switch<br>Charge or replace battery<br>Short in cable, repair or replace<br>Repair or replace earth strap<br>Repair or replace<br>Repair or replace hand control               |
| Motor runs slowly                    | Low voltage<br><br>Brushes are dirty or worn out  | Check and clean all battery connections<br>Check battery condition<br>Replace brushes or motor   |
| Empty platform will not raise        | Low hydraulic oil   | Check oil level<br>Check hydraulic system for leaks<br>Hydraulic oil use ISO Grade 32  |
| Motor runs – platform will not raise | Flow control valve is closed<br><br>Low oil   | Adjust or replace flow control valve<br><br>Top up oil   |
| Platform will not lower              | Isolator switch is off<br>No current on lowering valve in power pack<br><br>Lowering valve defective<br>Mechanical hose burst valve defective<br>Flow control valve is closed                 | Turn on isolator switch<br>Check for current at lowering valve solenoid by energizing the 'lower' button<br>Clean or replace lowering valve<br>Adjust hose burst valve<br><br>Adjust or replace flow control valve |

# TAILGATE REGISTRATION

## TAILGATE REGISTRATION

OWNER:.....

COMPANY  
NAME:.....

POSTAL  
ADDRESS:.....

POSTCODE:..... STATE:.....

TAILGATE SERIAL  
NUMBER:.....

PHONE  
NUMBER:.....

FAX  
NUMBER:.....

PLEASE CONTACT THE OWNER TO ARRANGE FOR EZILIFT TO  
SERVICE AND MAINTAIN THE TAILGATE: \_\_\_\_\_ YES/NO.

**PLEASE NOTE**  
**TO MAINTAIN YOUR EZILIFT TAILGATE LOADER  
WARRANTY IT MUST BE SERVICED EVERY 3 MONTHS BY  
AN AUTHORIZED EZILIFT AGENT. FAILURE TO DO SO  
WILL VOID THE WARRANTY**

---

## Service History

---

NEXT SERVICE DUE:     /   /

NEXT SERVICE DUE:     /   /

NEXT SERVICE DUE:     /   /

NEXT SERVICE DUE:     /   /

NEXT SERVICE DUE:     /   /

NEXT SERVICE DUE:     /   /

NEXT SERVICE DUE:     /   /

NEXT SERVICE DUE:     /   /

---

---

## **EZILIFT Pty. Limited Warranty Policy**

EZILIFT SERVICES (“EZILIFT”) products are designed and tested to conform to the relevant Australian standards; its tailgate lifting equipment is manufactured to be of quality workmanship and materials. EZILIFT products have been tested, and found to be free of defects in workmanship and materials occurring within the specified time of the warranty.

The specified time being (12) twelve months from the date of delivery stated below,

The installation date where EZILIFT has installed and commissioned the tailgate or

The shipping date where the tailgate has been purchased, to be installed by a recognized EZILIFT agent, or the purchaser’s agent.

The limit of EZILIFT liability is to the repair of the product, or payment of cost of replacement or equivalent product at the total discretion of EZILIFT.

EZILIFT advises that in the case of the need for repairs or replacement spare parts, these services will only be preformed at EZILIFT or one of its authorized agents. EZILIFT will not be liable for any costs incurred for the transport of these goods to the above-mentioned premises.

### **TERMS AND CONDITIONS.**

The warranty shall remain valid provided the product is:

Installed and commissioned in accordance with the EZILIFT installation manual.

Used only as intended for the movement of goods.

Not modified in any manner without written conformation from EZILIFT.

Serviced and maintained ON A THREE MONTHLY BASIS by EZILIFT or an authorized EZILIFT agent.

Made available for any repairs during regular business hours.

**The warranty is void if the product is:**

Incorrectly installed

Damaged caused by abuse or misuse.

Not regularly maintained as per EZILIFT recommendations.

Normal wears and tear

Any damage to others property or equipment.

---

Any costs associated with the product being out of order.  
Any damage to goods in transport.

This warranty represents the complete agreement between EZILIFT and the owner or his/hers agents.

This warranty is expressly in lieu of all other warranties express or implied and, to the fullest extent permitted by law; all other warranties are hereby excluded.

---